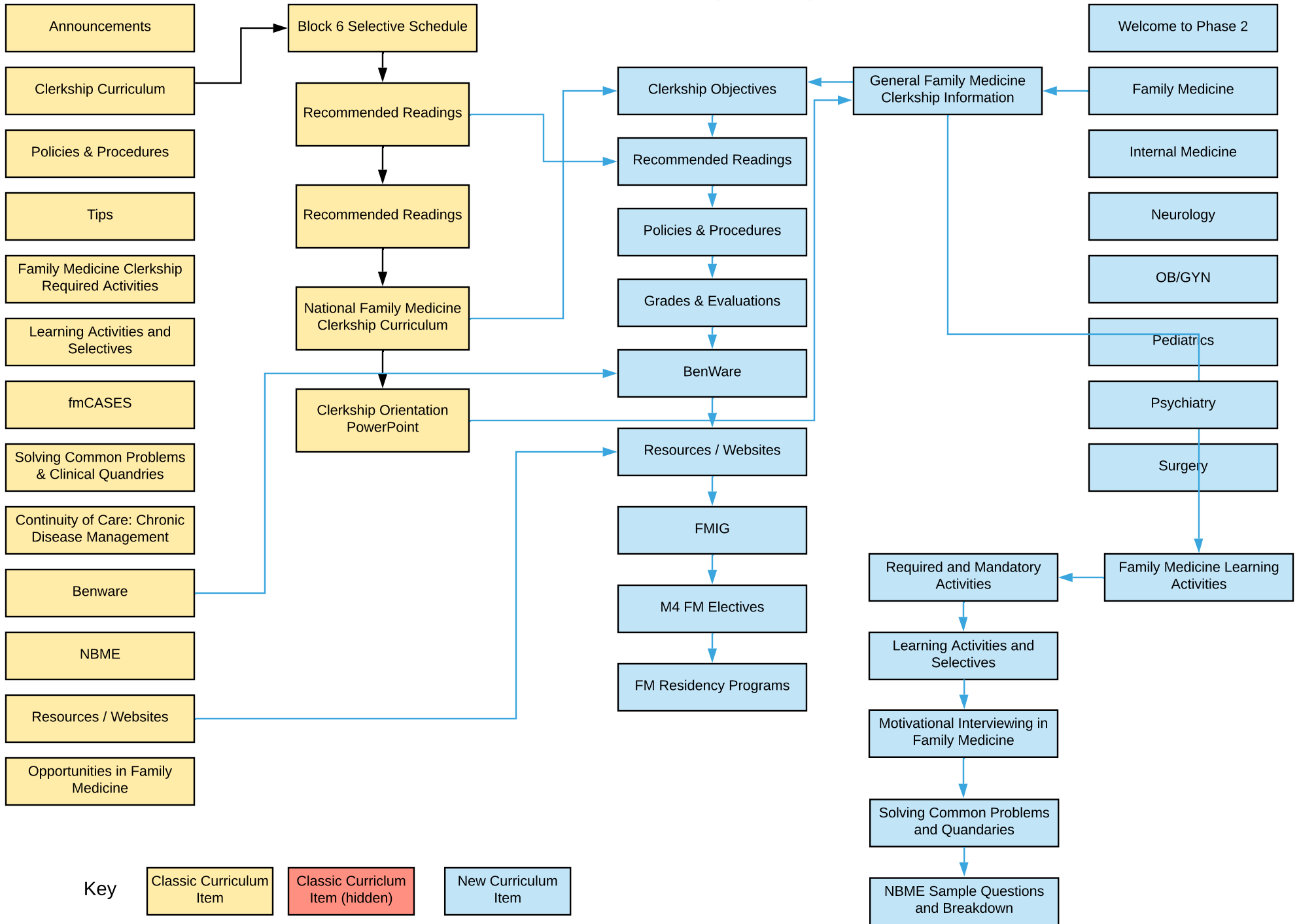
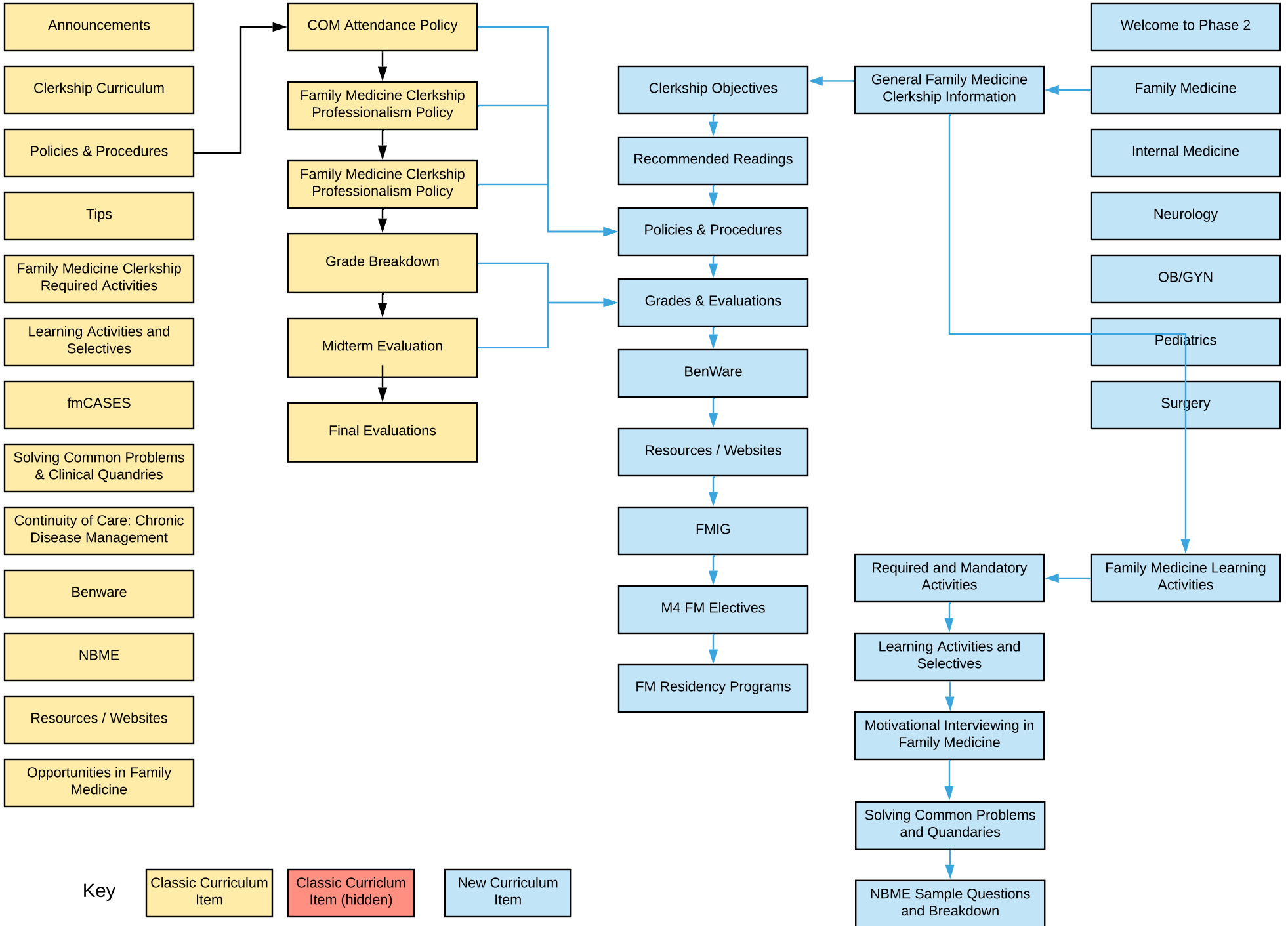


Family Medicine (Chicago)



Family Medicine (Chicago)



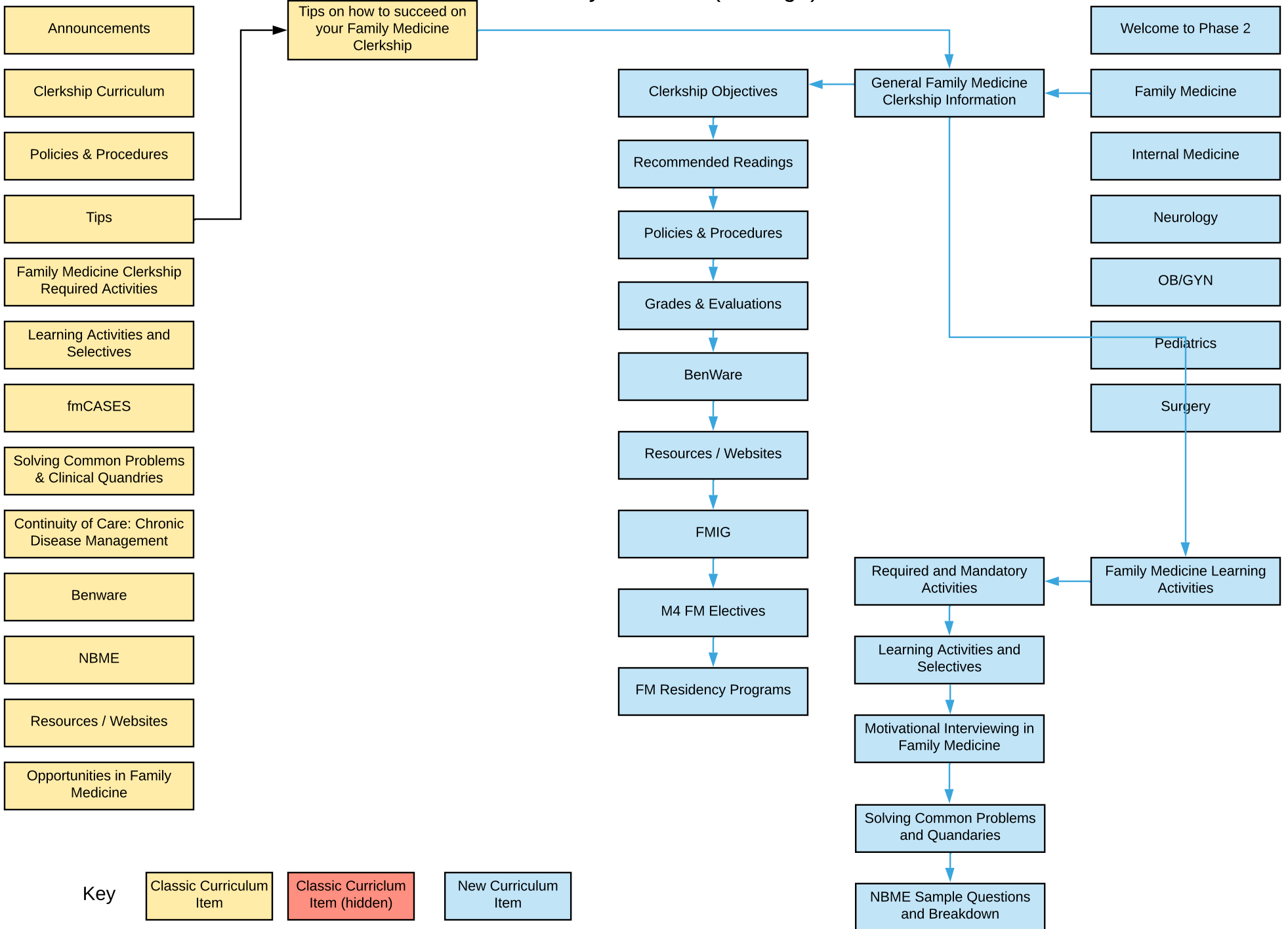
Key

Classic Curriculum Item

Classic Curriculum Item (hidden)

New Curriculum Item

Family Medicine (Chicago)



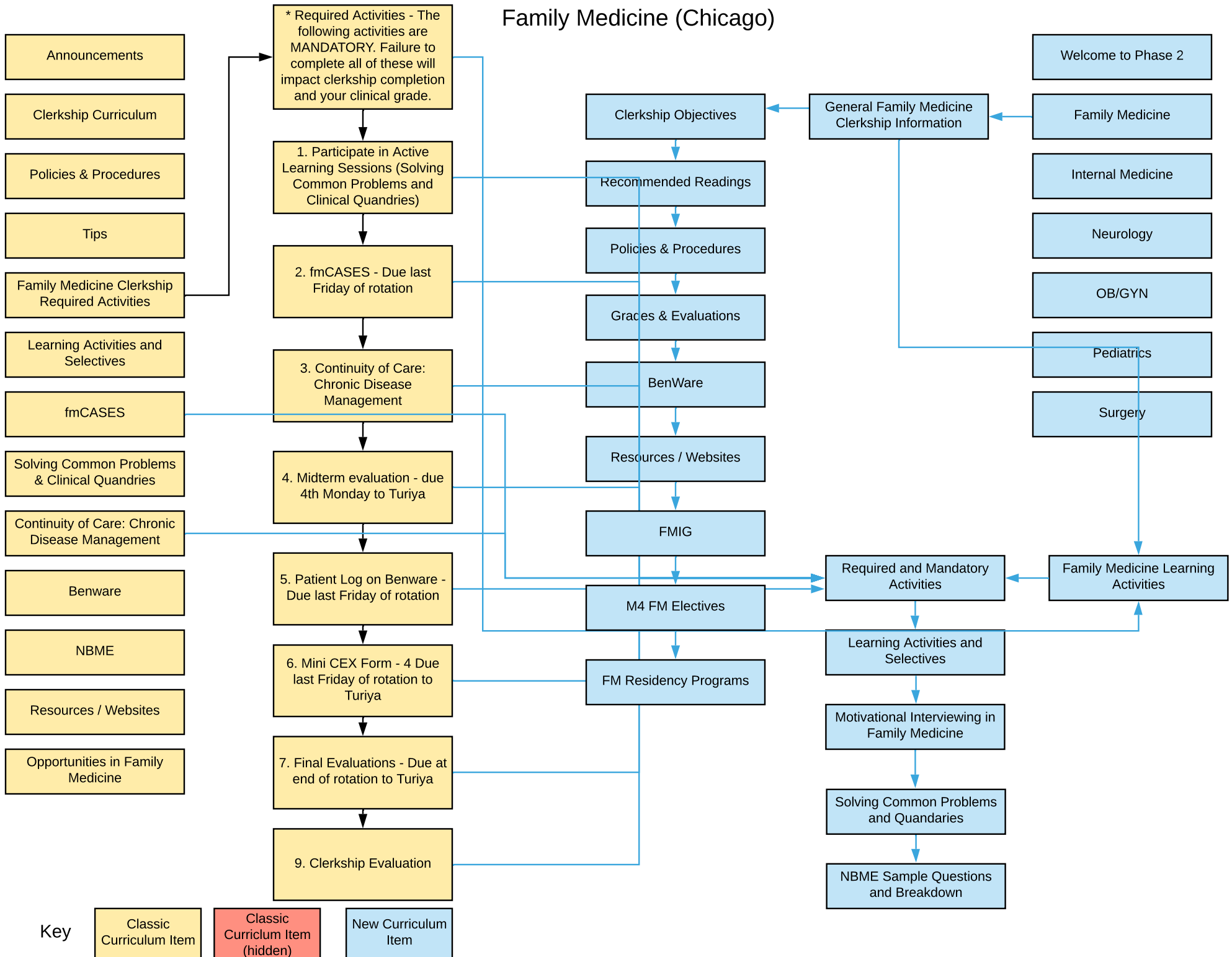
Key

Classic Curriculum Item

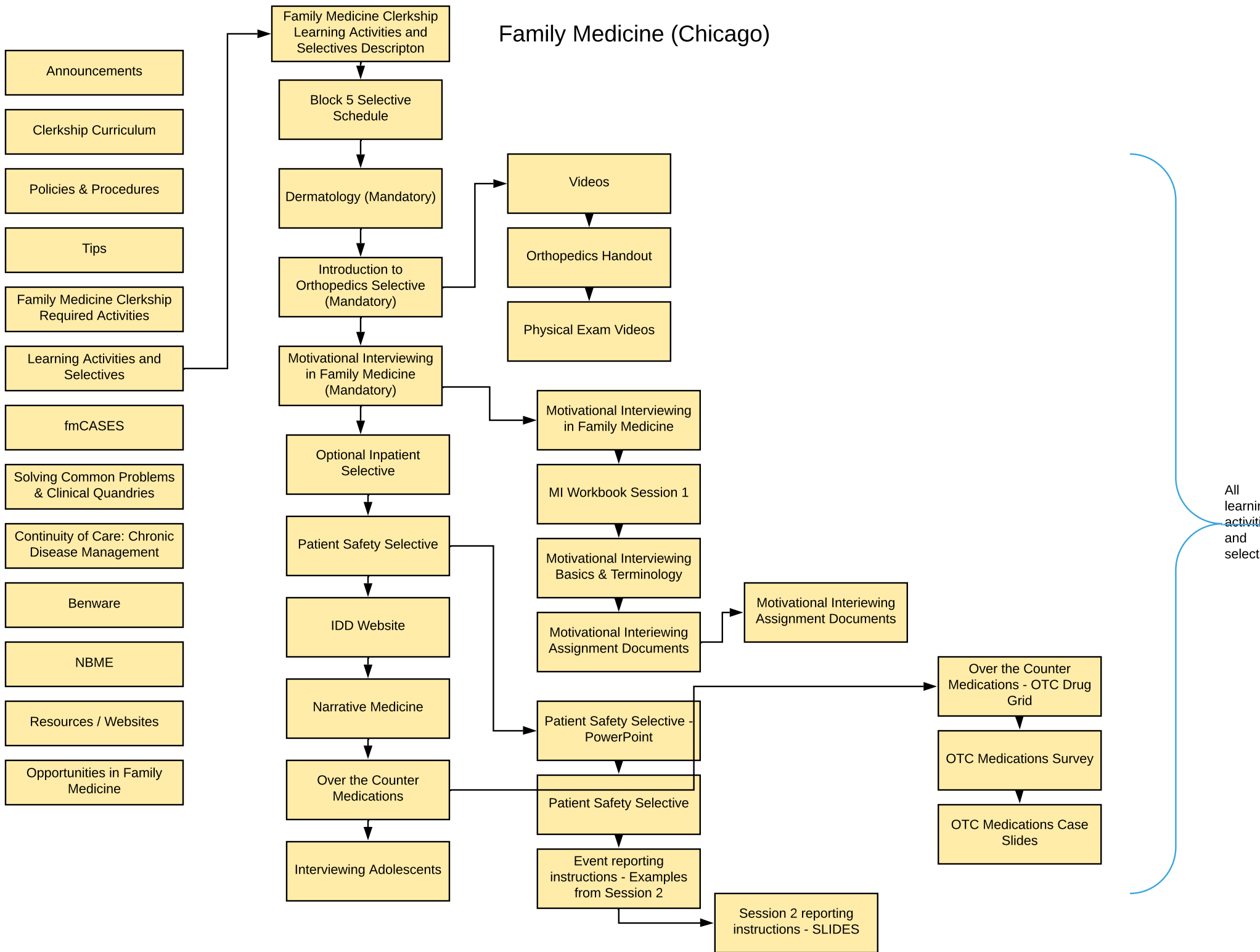
Classic Curriculum Item (hidden)

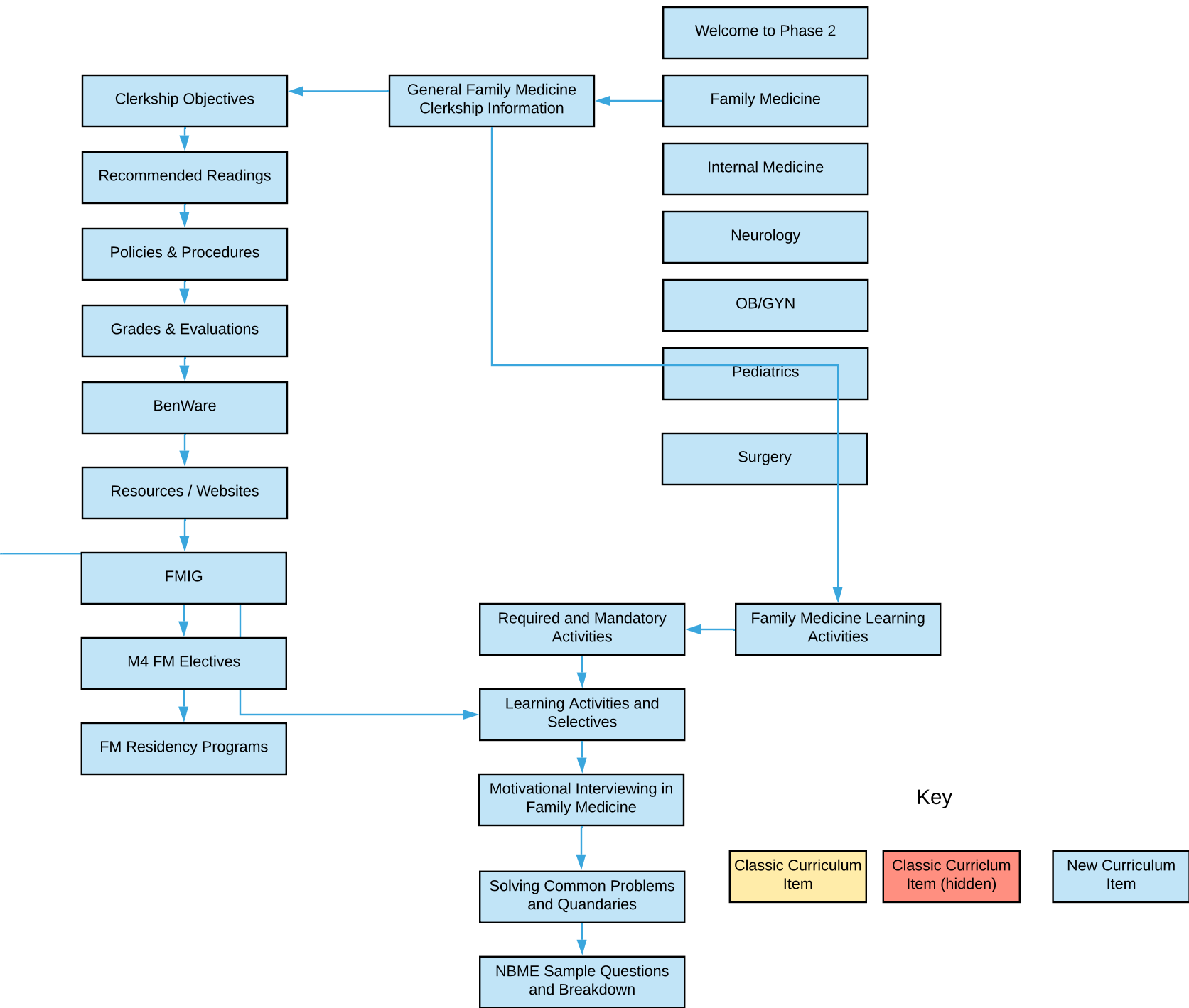
New Curriculum Item

Family Medicine (Chicago)

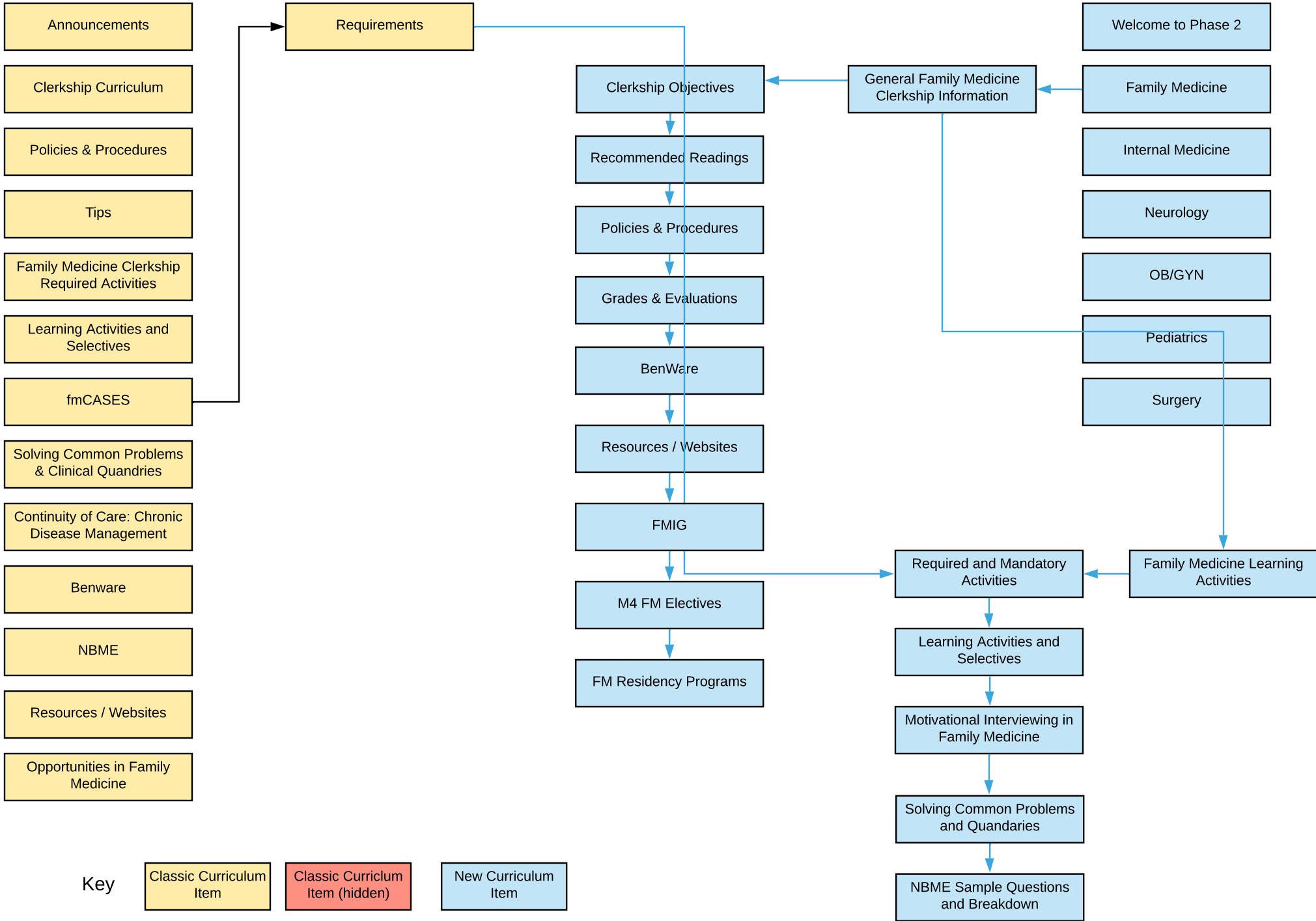


Family Medicine (Chicago)



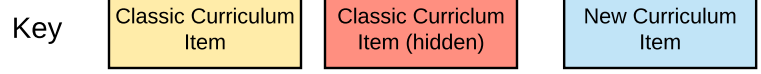
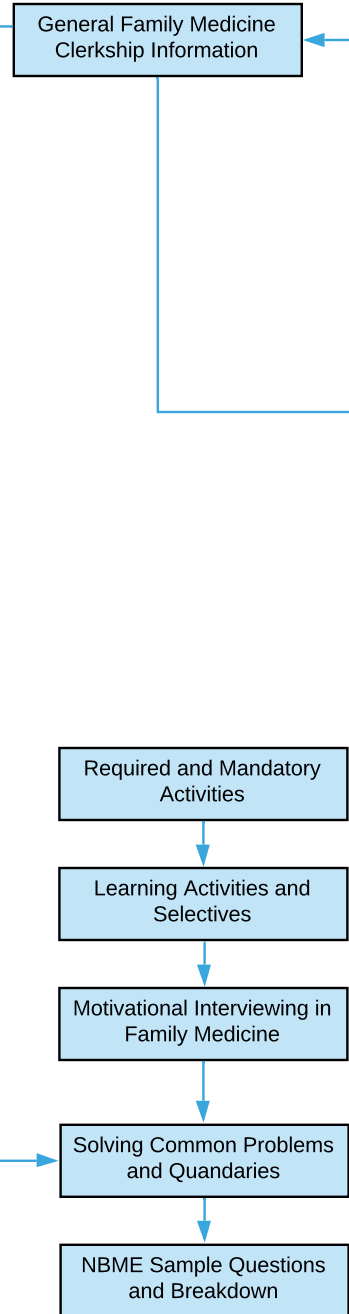
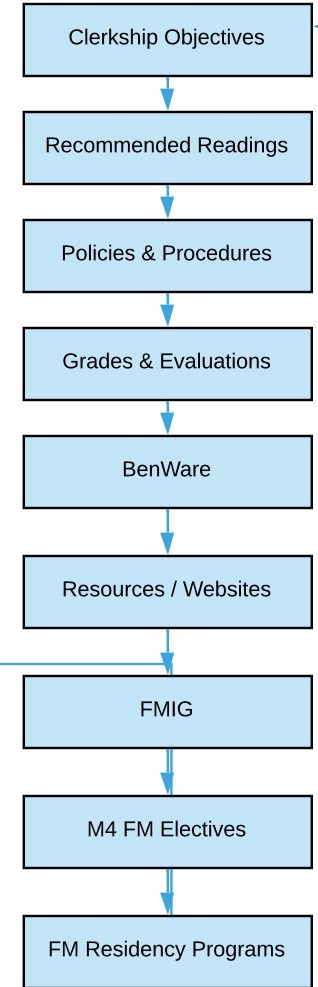
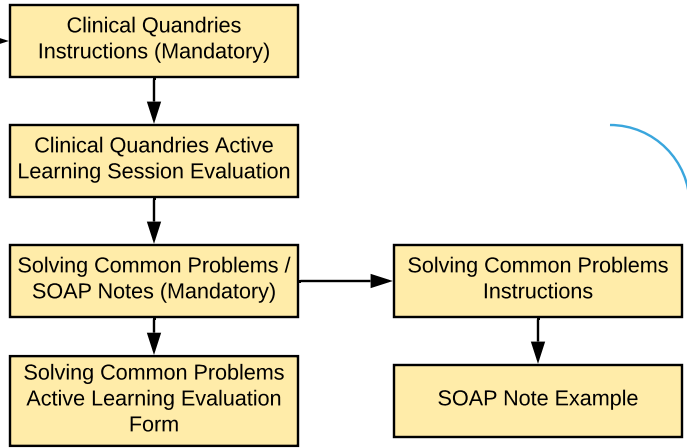


Family Medicine (Chicago)



Family Medicine (Chicago)

- Announcements
- Clerkship Curriculum
- Policies & Procedures
- Tips
- Family Medicine Clerkship Required Activities
- Learning Activities and Selectives
- fmCASES
- Solving Common Problems & Clinical Quandaries
- Continuity of Care: Chronic Disease Management
- Benware
- NBME
- Resources / Websites
- Opportunities in Family Medicine



Welcome to Phase 2

Family Medicine

Internal Medicine

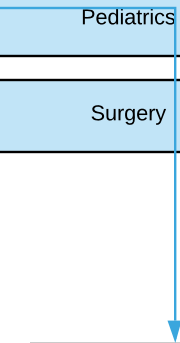
Neurology

OB/GYN

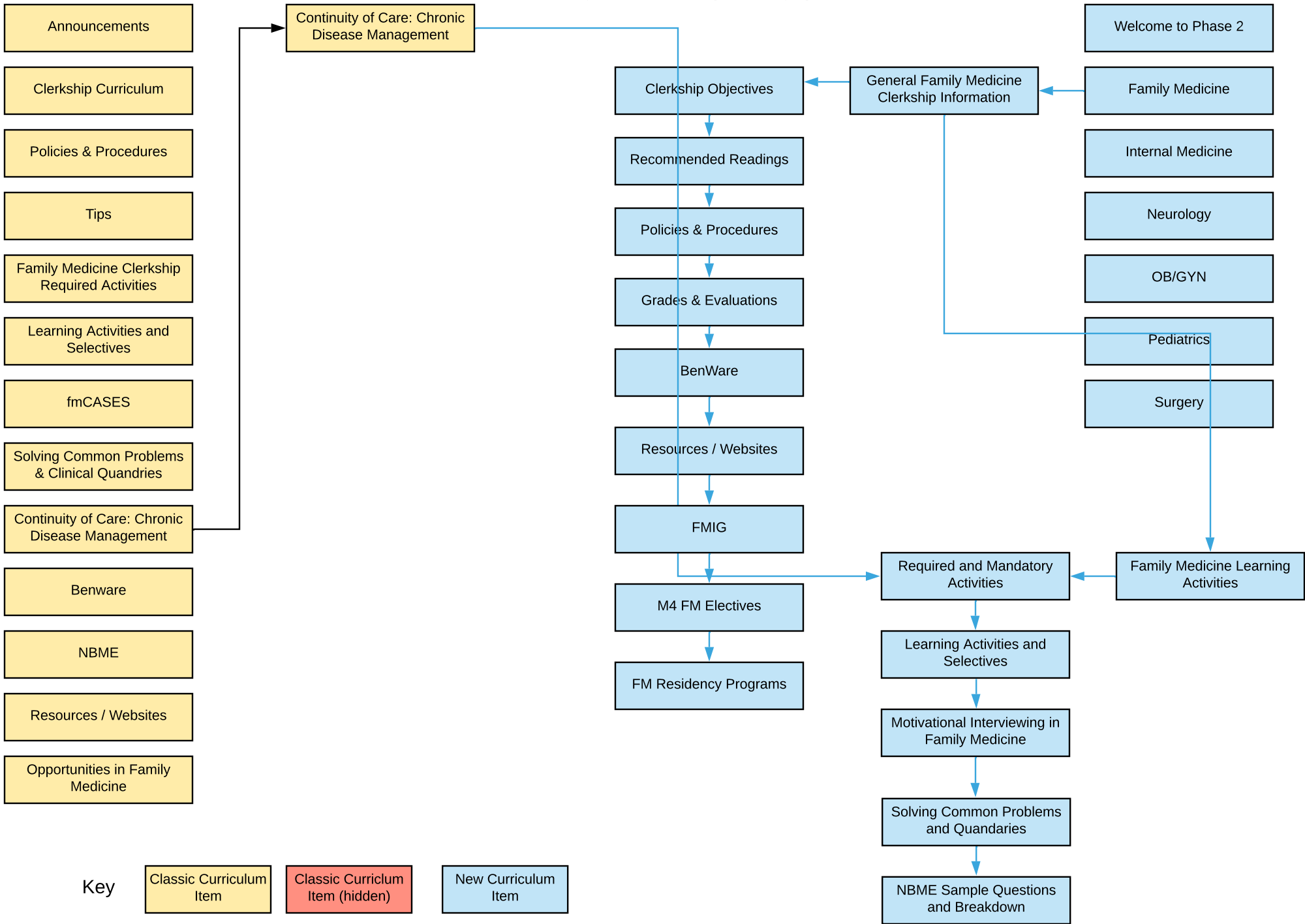
Pediatrics

Surgery

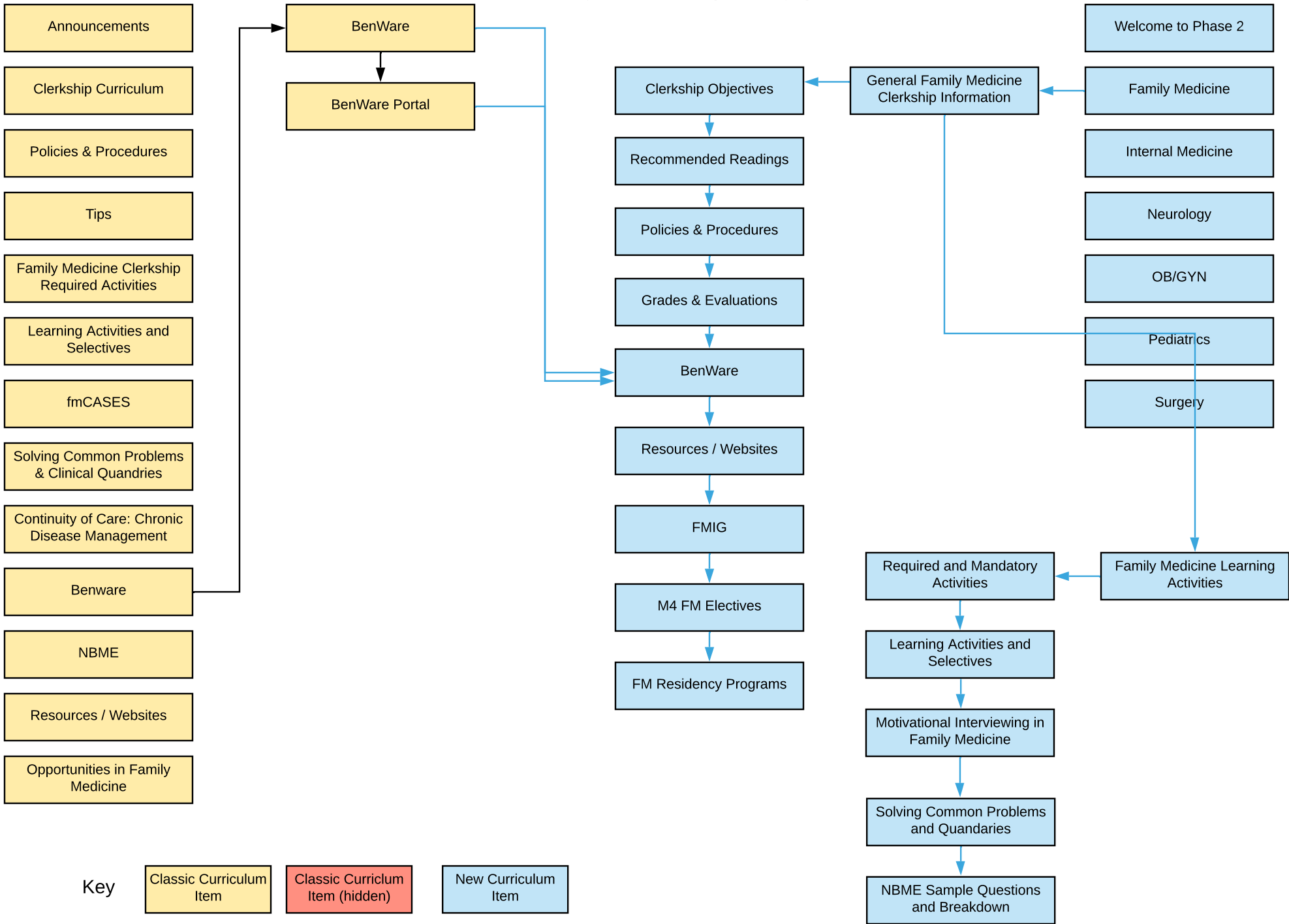
Family Medicine Learning
Activities



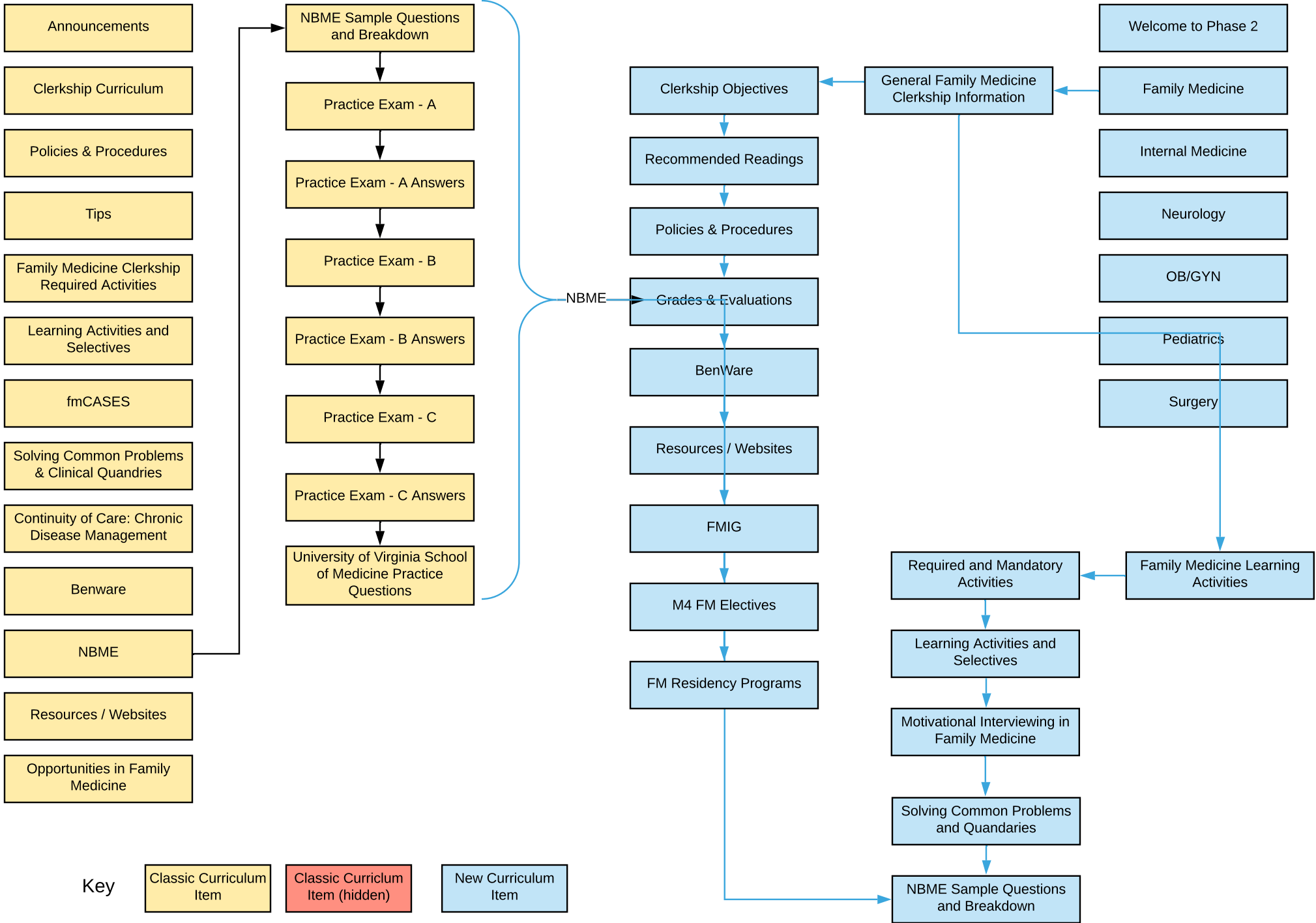
Family Medicine (Chicago)

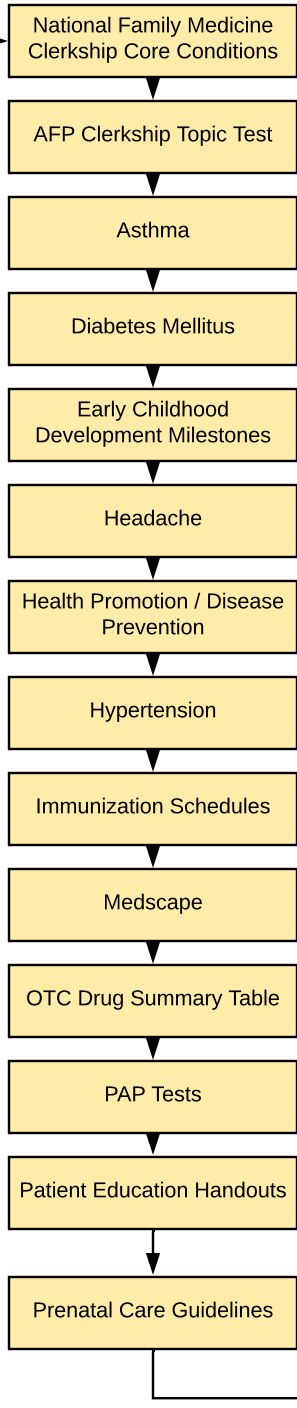
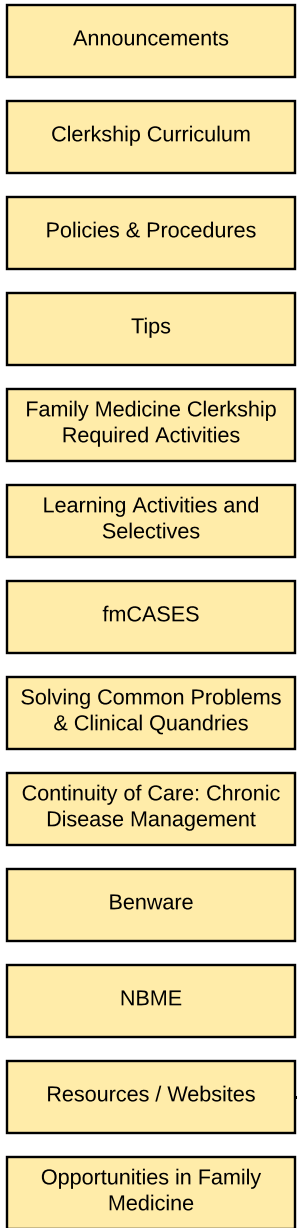


Family Medicine (Chicago)

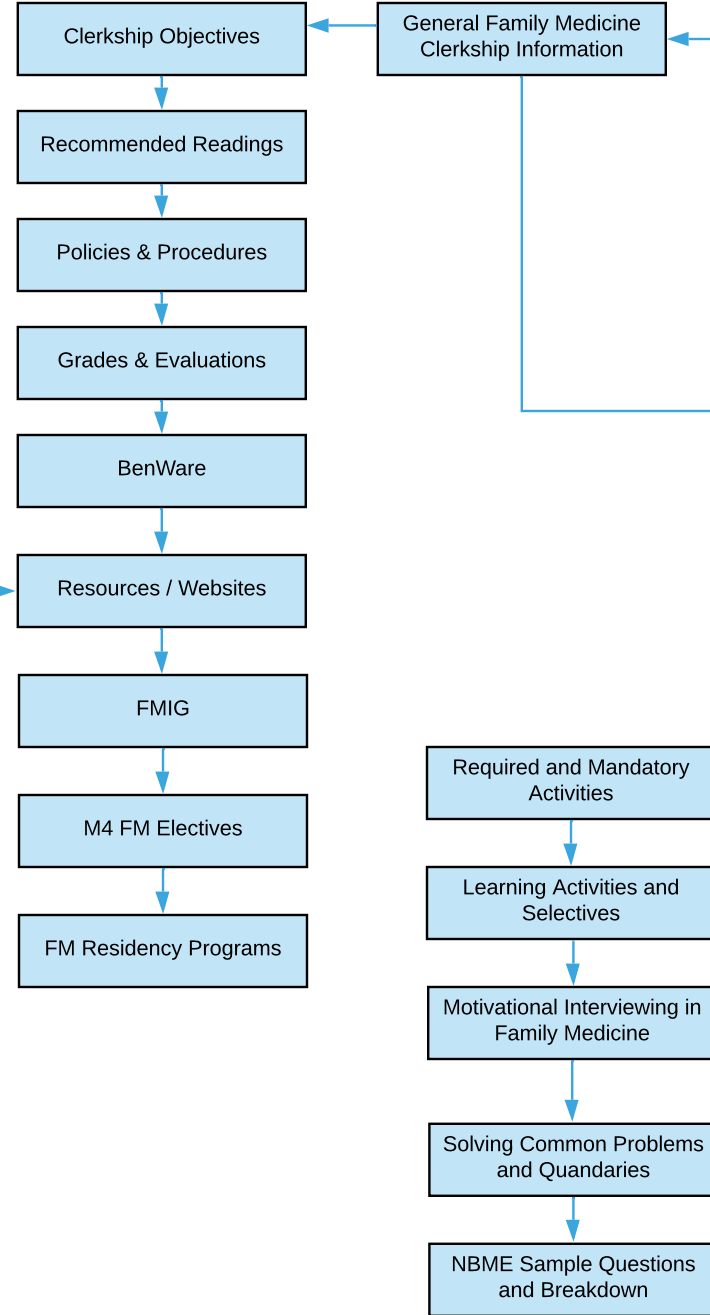


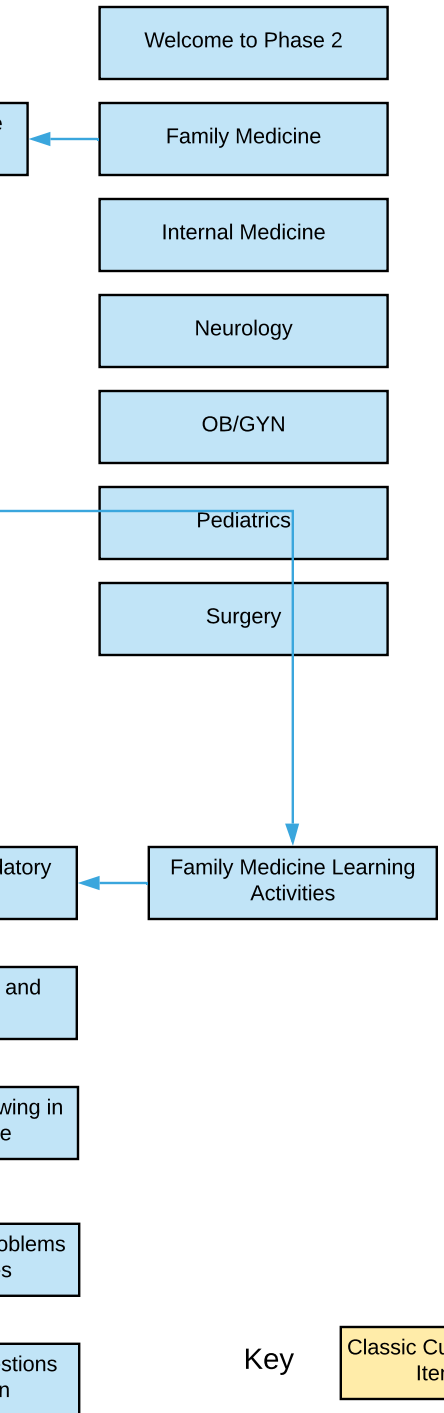
Family Medicine (Chicago)





Family Medicine (Chicago)





Key

Classic Curriculum Item

Classic Curriculum Item (hidden)

New Curriculum Item

Family Medicine (Chicago)

